



Issue No. WTB0812

The image shows a close-up of a wind turbine's hub and blades against a background of interlocking puzzle pieces. One puzzle piece is missing, revealing a detailed view of a dark-colored brake component with a yellow piston. The text 'W.C. Branham Wind Turbine Brakes' is positioned in the upper left, followed by 'An Important Piece to your Wind Turbine Solution.' Below that, the text 'American Owned American Made' is accompanied by a small American flag icon.

Wind Turbine Brakes

Mother Nature is powerful but as a leading U.S. maker of Caliper Disc Brakes with over three decades of manufacturing and custom design experience, our brakes will meet the challenge.

An Important Piece of Your Wind Turbine Solution

The need for harnessing wind energy is more relevant today than ever before. The need to safely stop wind turbine rotors in various wind conditions is just as relevant. That is why, W.C. Branham wind turbine brakes provide you with choice of service type, performance and size. Hydraulic, hydraulic spring applied, pneumatic spring applied, and mechanical wind turbine brakes are built -to-order with fast delivery. Standard models with custom variations are just a short lead-time away from your door. W.C. Branham can meet your demand.

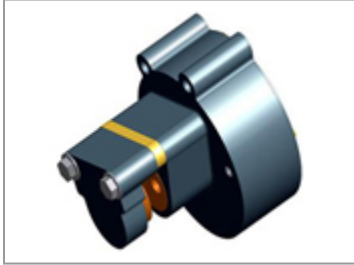
North America And Beyond

Made in River Falls, Wisconsin. Sourcing your wind turbine brakes locally makes dollars and sense as it helps you control budget by doing away with hefty shipping, importing, and currency conversion costs. Overseas transportation and U.S. Customs clearance delays are eliminated. All for the benefit of your bottom line.

W.C. Branham Works With You

We are and remain a friend and trusted partner to the wind energy community. One of our many strengths is grasping our client's needs. Let us help you solve your wind turbine rotor stopping application today.

Various W.C. Branham Brakes For The Wind Industry



PFS47 [pneumatic spring applied]

Single Belleville disc spring stack. 465 lb. tangential force maximum. Unlimited disc diameter 4.0 square inch friction pad area. Single acting. 85 PSI release pressure. 6,570 inch lb. braking torque with 30 inch disc diameter. 1,033 lb. maximum clamping force.

Available Models:

- [4004-0222W](#) - PFS47AF - 5/32 inch thick disc
- [4004-0225W](#) - PFS47BF - 1/4 in.
- [4004-0226W](#) - PFS47LF - 3/8 in.
- [4004-0227W](#) - PFS47EF - 1/2 in.
- [4004-0256W](#) - PFS47TF - 3/4 in.

▶ [Read More](#)



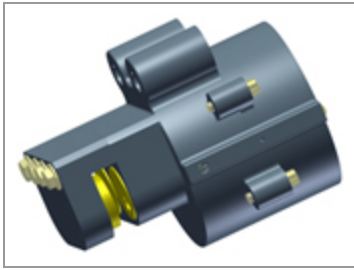
PFS200 [pneumatic spring applied]

Dual Belleville disc spring stacks. 929 lb. tangential force maximum. Single acting. 819 square inch friction pad area. 85 PSI release pressure. Up to 16 inch disc diameter. 6,626 inch lb. braking torque with 16 inch disc diameter. 2,065 lb. maximum clamping force.

Available Models:

- [4004-0231W](#) - PFS200AF - 5/32 inch thick disc
- [4004-0232W](#) - PFS200BF - 1/4 in.
- [4004-0233W](#) - PFS200LF - 3/8 in.
- [4004-0234W](#) - PFS200EF - 1/2 in.
- [4004-0265W](#) - PFS200TF - 3/4 in.

▶ [Read More](#)



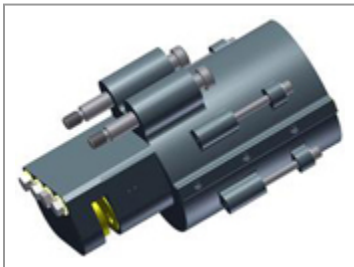
PFS200SUL [pneu. spring applied]

Unlimited disc diameter. Dual Belleville disc spring stacks. 929 lb. tangential force maximum. 8.19 square inch friction pad area. Single acting. Float mount. 85 PSI release pressure. 13,129 inch lb. braking torque with 30 inch disc diameter. 2065 lb. maximum clamping force. Fixed double acting models too.

Available Models:

- [4005-0030W](#) - PFS200SAUL - 5/32 inch thick disc
- [4005-0031W](#) - PFS200SBUL - 1/4 in.
- [4005-0032W](#) - PFS200SLUL - 3/8 in.
- [4005-0033W](#) - PFS200SEUL - 1/2 in.
- [4005-0034W](#) - PFS200SJUL - 5/8 in.
- [4005-0035W](#) - PFS200STUL - 3/4 in.
- [4005-0036W](#) - PFS200SOUL - 1.0 in.
- [4005-0037W](#) - PFS200SQUL - 1-1/8 in.

► [Read More](#)



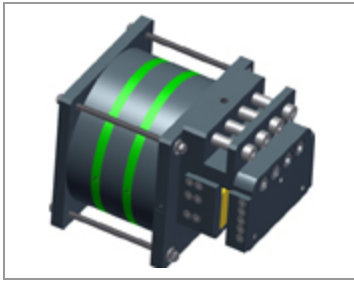
PFS400 [pneumatic spring applied]

Dual Belleville disc spring stacks. 1888 lb. tangential force maximum. Fits on brake discs up to 40 inch diameter. 8.19 square inch friction pad area. 100 PSI release pressure. 35,568 inch lb. braking torque with 40 inch disc diameter. 4,130 lb. maximum clamping force.

Available Models:

- [4004-0771W](#) - PFS400AF - 5/32 inch thick disc
- [4004-0772W](#) - PFS400BF - 1/4 in.
- [4004-0773W](#) - PFS400LF - 3/8 in.
- [4004-0774W](#) - PFS400EF - 1/2 in.
- [4004-0775W](#) - PFS400HF - 5/8 in.
- [4004-0776W](#) - PFS400TF - 3/4 in.
- [4004-0777W](#) - PFS400OF - 1.0 in.
- [4004-0778W](#) - PFS400QF - 1-1/8 in.

► [Read More](#)



PFS522 [pneumatic spring applied]



85 PSI Retractable Release Pressure | Aluminum Construction | Dual Belleville Disc Spring Stacks | Quick Change Pad Feature | Fits on Brake Discs Diameters from 20 inches to Unlimited Diameter | .45 Coefficient of Friction Pad #9511023 | Non-Asbestos Friction Material | Spring Stacks in Parallel | Buna-N Seals | 12,236 lb. Maximum Tangential Force | 220,651 in. lbs. F using 40 inch Disc Diameter | 27,192 lb. Clamping Force

Available Models:

[4252-0080W](#) - PFS522SE - 1/2 inch thick disc

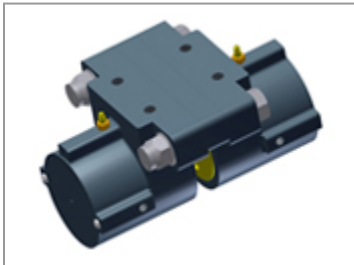
[4252-0081W](#) - PFS522SJ - 5/8 in.

[4252-0082W](#) - PFS522ST - 3/4 in.

[4252-0083W](#) - PFS522SO - 1.0 in.

[4252-0084W](#) - PFS522SQ - 1-1/8 in.

► [Read More](#)



FS500 [hydraulic spring applied]



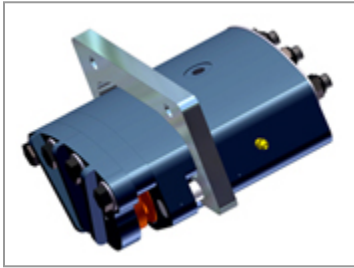
Double or single acting. Dual Belleville disc spring stacks. Maximum 3059 lb. tangential force. 14 inch to unlimited disc diameter. 1500 PSI release pressure. 41,112 inch lb. braking torque with 30 inch disc diameter. 6,798 lb. maximum clamping force.

Available Models:

- [4500-0001W](#) - FS500DB - 1/4 inch thick disc
- [4500-0002W](#) - FS500DL - 3/8 in.
- [4500-0003W](#) - FS500DE - 1/2 in.
- [4500-0004W](#) - FS500DT - 3/4 in.
- [4500-0005W](#) - FS500DO - 1.0 in.
- [4500-0006W](#) - FS500DQ - 1-1/8 in.
- [4500-0007W](#) - FS500SB - 1/4 in.
- [4500-0008W](#) - FS500SQ - 1-1/8 in.
- [4500-0014W](#) - FS500SL - 3/8 in.
- [4500-0015W](#) - FS500SE - 1/2 in.

- [4500-0016W](#) - FS500ST - 3/4 in.
- [4500-0017W](#) - FS500SO - 1.0 in.
- [4500-0019W](#) - FS500SJ - 5/8 in.

▶ [Read More](#)



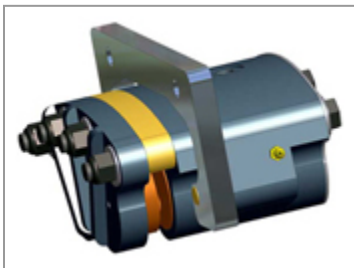
FS400 [hydraulic spring applied]

Dual Belleville disc spring stacks. 1859 lb. tangential force maximum. Up to 16 inch disc diameter. 1500 PSI release pressure. 2000 PSI maximum pressure. 13,260 inch lb. braking torque with 16 inch disc diameter. 4,130 lb. maximum clamping force.

Available Models:

- [4004-0840W](#) - FS400A - 5/32 inch thick disc
- [4004-0841W](#) - FS400AF - 5/32 in.
- [4004-0842W](#) - FS400B - 1/4 in.
- [4004-0843W](#) - FS400BF - 1/4 in.
- [4004-0844W](#) - FS400E - 1/2 in.
- [4004-0845W](#) - FS400EF - 1/2 in.
- [4004-0846W](#) - FS400L - 3/8 in
- [4004-0847W](#) - FS400LF - 3/8 in.

▶ [Read More](#)



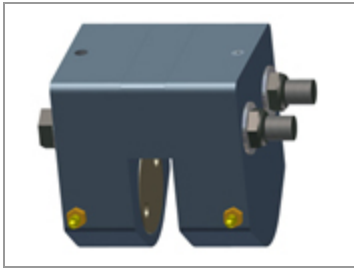
FS200 [hydraulic spring applied]

Dual Belleville disc spring stacks. 929 lb. tangential force maximum. Up to 16 inch disc diameter. 750 PSI release pressure. 1500 PSI maximum pressure. 6,626 inch lb. braking torque with 16 inch disc diameter. 2,065 lb. maximum clamping force.

Available Models:

- [4004-0164W](#) - FS200AF - 5/32 inch thick disc
- [4004-0165W](#) - FS200BF - 1/4 in.
- [4004-0166W](#) - FS200EF - 1/2 in.
- [4004-0205W](#) - FS200LF - 3/8 in.

▶ [Read More](#)



H491 [hydraulic]

Double or single acting. 353 lb tangential force/ 100 PSI. 9.14 square inch friction pad area. 1500 PSI maximum pressure. Fixed or float mount. Unlimited disc diameter.

Available Models:

[4251-0003W](#) - H491DE - 1/2 inch thick disc

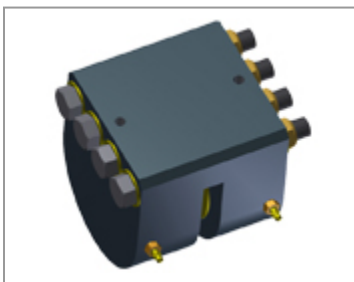
[4251-0005W](#) - H491DT - 3/4 in.

[4251-0007W](#) - H491DO - 1.0 in.

[4251-0009W](#) - H491DQ - 1-1/8 in.

[4251-0035W](#) - H491DL - 3/8 in.

▶ [Read More](#)



H662DR [hydraulic]



Machined Aluminum Construction | Hardcoated | Fits on Brake Discs from 14 inch to unlimited Diameter | Replaceable Friction Pads | Internal Crossover Porting | 9.62 Sq. in. Piston Area x 2 | Dynamic torque (inch/lb): 693 lbf per 100 psi x braking radius (in.) | Parking/static torque (inch/lb): 347 lbf per 100 psi x braking radius (in.)

Available Models:

[4355-0030W](#) - H662DER - 1/2 inch thick disc

[4355-0041W](#) - H662DBR - 1/4 in.

[4355-0042W](#) - H662DLR - 3/8 in.

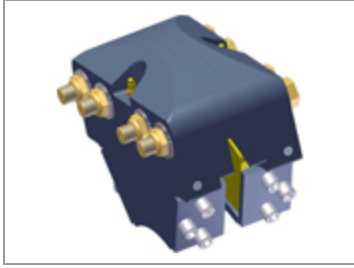
[4355-0043W](#) - H662DJR - 5/8 in.

[4355-0044W](#) - H662DTR - 3/4 in.

[4355-0045W](#) - H662DOR - 1.0 in.

[4355-0046W](#) - H662DQR - 1-1/8 in.

▶ [Read More](#)



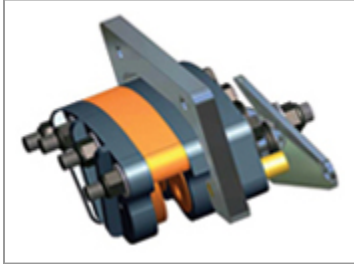
H962D/H962DUL [hydraulic]

Double acting. 1000 PSI maximum pressure. 9.62 square inch friction pad area. Quick change pads. Up to 6542 lb. tangential force. Fixed mount. H962: 18 inch disc diameter maximum. H962DUL: Fits unlimited brake disc diameters.

Available Models:

- [4355-0000W](#) - H962DQ - 1-1/8 inch thick disc
- [4355-0002W](#) - H962DT - 3/4 in.
- [4355-0005W](#) - H962DE - 1/2 in.
- [4355-0009W](#) - H962DO - 1.0 in.
- [4355-0022W](#) - H962DEUL - 1/2 in.
- [4355-0023W](#) - H962DJUL - 5/8 in.
- [4355-0024W](#) - H962DTUL - 3/4 in.
- [4355-0025W](#) - H962DOUL - 1.0 in.
- [4355-0026W](#) - H962DQUL - 1-1/8 in.

► [Read More](#)



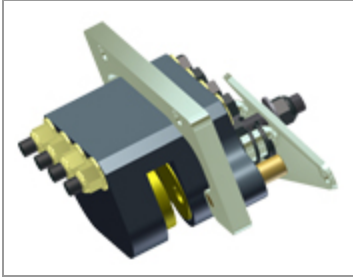
M200 [mechanical]

Dual spring retractable pistons. 580 lb. lever force. 34,000 inch lb. dynamic braking torque maximum. M200: 16 inch disc diameter maximum. M200UL: Fits unlimited brake disc diameters. 8.0 square inch friction pad area.

Available Models:

- [4004-0404W](#) - M200AF - 5/32 inch thick disc
- [4004-0405W](#) - M200BF - 1/4 in.
- [4004-0406W](#) - M200EF - 1/2 in.
- [4004-0407W](#) - M200LF - 3/8 in.

► [Read More](#)



M200UL [mechanical]



Available W.C. Branham Brake Discs: 6 5/16", 8", 10", 12" Diameter | Fits on Unlimited Brake Disc Diameter | Replaceable Friction Pads (WCB p/n 4000-1052) | Dynamic torque (inch/lb) 7.45 x Lever Force (lb.) x braking radius | Parking/static torque 3.73 x Lever Force (lb) per x braking radius

Available Models:

[4004-0430W](#) - M200AFUL - 5/32 inch thick disc

[4004-0431W](#) - M200BFUL - 1/4 in.

[4004-0432W](#) - M200LFUL - 3/8 in.

[4004-0433W](#) - M200EFUL - 1/2 in.

[4004-0434W](#) - M200JFUL - 5/8 in.

[4004-0435W](#) - M200TFUL - 3/4 in.

[4004-0436W](#) - M200OFUL - 1.00 in.

[4004-0437W](#) - M200QFUL - 1-1/8 in.

▶ [Read More](#)

Copyright © 2012 by W.C. Branham, Inc. All rights reserved.

Phone: (941) 896-8000 | **Fax:** (941) 896-8002